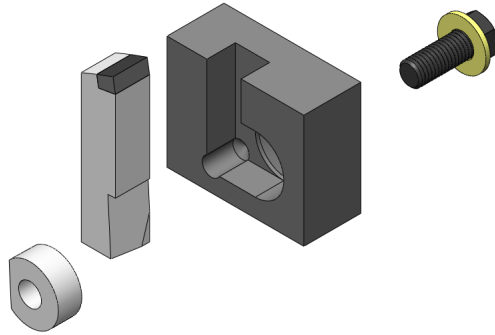


## SS SYSTEM SERVICE PROCEDURE



**CAUTION: Wear safety glasses, close-toed shoes, and other protective clothing at all times while performing service to drum.**

To ensure a smooth pattern, match the length of all replacement bits to the existing bits on the drum. This can be done by grinding the bottom of a new replacement bit or using a used bit that has been worn to the same length. *Keystone now offers PCD diamond bits that outlast carbide bits 50-1, call 317-271-6192 for more information.*

1. Rotate drum so the broken bit(s) are positioned at the top.
2. To remove the bit, loosen the wedge bolt two to three full turns and then tap the back of the bolt with a hammer to break the wedge's bond. A pneumatic palm nailer can be used to dislodge the wedge. If the wedge's bond does not break hit the bit in the direction of the base block and then in the direction away from the base block with a sledgehammer.
3. Clean bit holder pocket extensively.
4. Place new bit in the base block and make sure the bottom of the bit is seated.
5. Apply anti-seize to the angled face of the wedge. Insert tapered wedge and tighten the bolt to 100 foot pounds.
6. Insert tapered wedge with anti-seize and tighten the bolt to 100 foot pounds.
7. After 8 hours of use, retighten the bolt to 100 foot pounds.

**WARNING: Never adjust or work on the drum while the power unit or attachment is running or the key is in the ignition. Serious injury or death could result. Before making any adjustments or performing any service to the grinding attachment; engage the parking brake, turn off engine and remove the ignition key.**