

MILLING ATTACHMENT

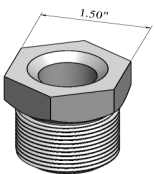


The KeyCut is a skid steer milling attachment that is ideal for patching, utility cuts and trimming.

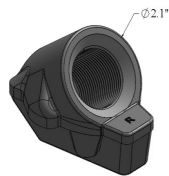
- 24" and 40" standard cut units
- Custom width drum options available
- 5"-8" cutting depth
- Standard, fine and micro drum spacing options
- Tooled with Keystone's Easy Screw Quick-Change Block System
- Electro-hydraulic control of depth, side shift and tilt
- Independent depth skis for precise lap cuts



Easy Screw Quick Change System



Easy Screw Insert



Easy Screw Base

