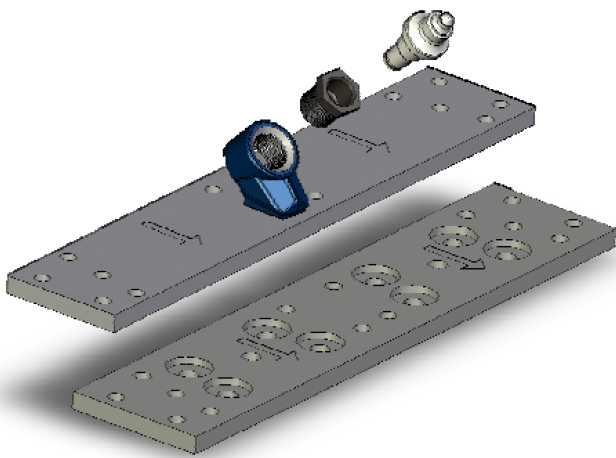




### BOLT-ON TRENCHING PLATES



- The bottom plate bolts directly to the chain and the hardened top plate bolts directly to the bottom plate
- No exposed bolt heads
- The bit holder can be placed anywhere on the plate no longer needing to consider the bolts location
- Keystone's patented Big EZ Quick-Change System allows users to eliminate the need for costly in-field welding



The bolt-on plate allows you to position bit holders to maximize cutting efficiency, dramatically improving bit life