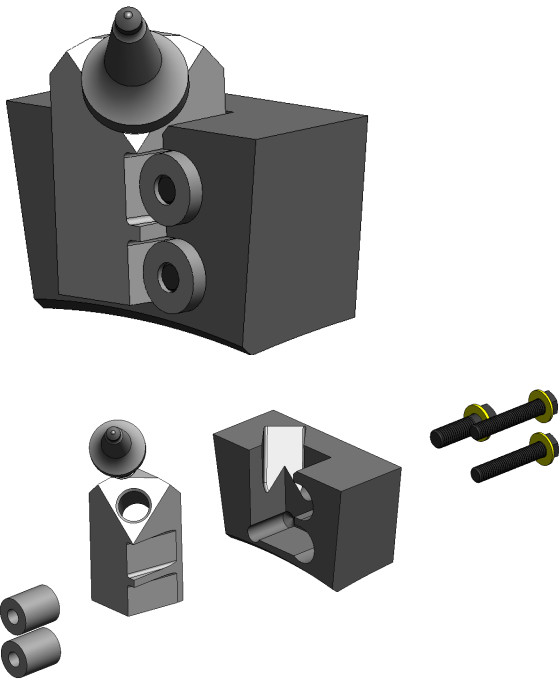


WEDGE LOCK QUICK-CHANGE SYSTEM



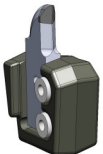
- Interchangeable toolholders for different trenching applications can convert a standard spaced drum into a rock drum without the costly expense of changing drums
- No tapered or threaded parts are welded to the drum providing a longer lasting block system. Industry standard Morse Taper systems wear and lose locking capability over time
- Continuous wrap design- Keystone's patented block to block welding technology- insures superior strength in the most extreme trenching environments
- Easily change from standard trenching tools to a radial trenching tools



Wedge Lock Toolholder

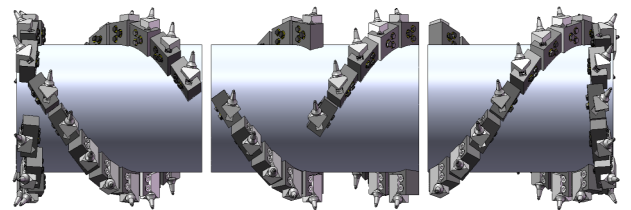


Wedge Lock Double Toolholder

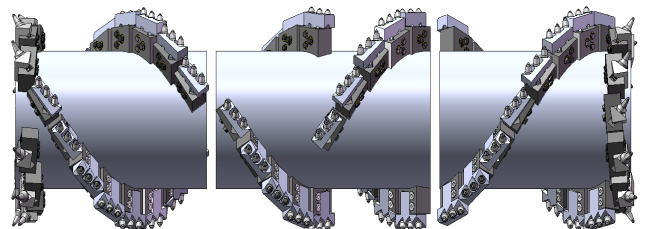


Radial Bit

TWO DRUMS IN ONE



Standard spaced drum built to any specification



Decrease spacing by 50%